

# Splice box S2/S4

## Beskrivning

S2/S4 splice box is a flexible solution in two sizes. One for splicing up to 96 fibers and one for splicing up to 192 fibers. The cassettes can tilt out to simplify management when splicing.

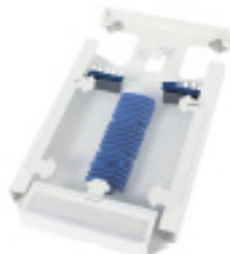
The smaller box is delivered with one cassette and one duct holder. The bigger box is delivered with two cassettes and two duct holders.

Each cassette has a capacity of 48 single splices.

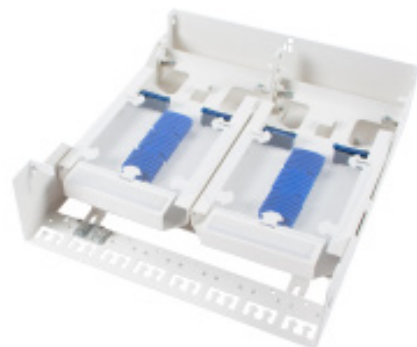
## Technical info

	2055140
Height	87mm
Width	148mm
Depth	398mm
Material	Aluzinc
Surface	Powdercoated White

	2055190
Height	87mm
Width	288mm
Depth	398mm
Material	Aluzinc
Surface	Powdercoated White



2055910



P/N	E-number	Description	P/N TS
2055140	5062147	Splice box S2 for 96 fiber	NBHA10139
2055190	5062148	Splice box S2 for 192 fiber	NBHA10140
2055910	5062149	Extra cassette 48 fiber	NCLA80103
2055944	5062150	Holder for 12 micro ducts, 4mm	
2055945	5062151	Holder for 12 micro ducts, 5mm	NTAA10119/5
2055947	5062152	Holder for 12 micro ducts, 7mm	NTAA10119/7